

Cordless Cleaner

36V R 36DA



**NEW**  
MULTI VOLT  
**BRUSH LESS**  
Brushless Motor

Cordless Cleaner

18V R 18DB



Specifications

Model		R 36DA	R 18DB
Battery Voltage		36V	18V
Dust Case Capacity		560mL	
Suction Work Rate	High	155W	40W
	Mid	65W	30W
	Low	35W	16W
Noise Level *1		72dB	68dB
Continuous Operating Time *2	Battery	BSL36A18	BSL1850 / BSL36A18
	High	15min	40min
	Mid	30min	48min
	Low	60min	66min
Overall Length		476mm / 1,003mm (with extension pipe and floor nozzle)	
Weight		1.6kg (inc. BSL36A18 Battery)	1.7kg (inc. BSL36A18 Battery)
Standard Accessories *3		Battery, Charger, Flooring Nozzle, Crevice Nozzle, Extension Pipe (with Nozzle Holder), Battery Cover	

Optional Accessories

For R 18DB, R 36DA



**High Performance Filter**  
Code No.376509

For R 10DAL, R 12DA, R 18DB, R 36DA



**Rack Brush**  
Code No.375371



**Round Brush**  
Code No.375372



**Flexible Hose**  
Code No.375373



**Angle Joint** \*4  
Code No.375374



**Extension Pipe (Short)**  
Code No.375375

For R 10DAL, R 12DA



**Pre Filter**  
Code No.337792



**Filter (1pcs.)**  
Code No.33793



**Filter (10pcs.)**  
Code No.371824

\*1. The noise levels are shown for reference purposes and vary according to the measurement system used.  
\*2. The stated continuous operation times are approximate, and the actual time varies depending on the battery state.  
\*3. Standard accessories may vary by country or area.  
\*4. Angle joint cannot be directly installed to the main unit. Use it as a set with the extension pipe or another accessory.

Distributed by:

Koki Holdings Co., Ltd.

# HIKOKI

UNLEASH the NEXT

Cordless Cleaners

36V R 36DA  
18V R 18DB

POWERFUL.  
QUIET. EFFICIENT.

**NEW**



18V

36V

**BRUSH LESS**  
Brushless Motor



R 36DA **MV** MULTI VOLT

**EXTREMELY POWERFUL**

**155W** SUCTION POWER

**72dB**<sup>\*1</sup>  
LOW NOISE<sup>\*2</sup>

Approx. **2x**<sup>\*2</sup>  
More Durability

**73,000 RPM**  
Brushless Motor

Runtime per Charge<sup>\*3</sup>  
with BSL 36A18 Battery

High	Approx. 15 min
Mid	Approx. 30 min
Low	Approx. 60 min
Charging time (with UC18YSL3 charger)	Approx. 32 min

R 36DA / R18DB

**Highly Efficient**

**HIGH PERFORMANCE FILTER**

A new **high-performance fabric filter** offers a filtration efficiency 36% (R36DA) / 39% (R18DB) greater than a conventional model<sup>\*2</sup><sup>\*4</sup>, thus capturing more fine dust.



**Indicator Lamp**

R36DA: Filter Cleaning Indicator  
R18DB: Low Battery Indicator

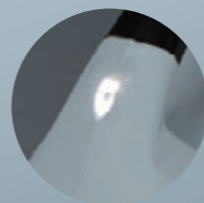
**Switch Panel**

The suction power can be switched between 3 modes: 3 HIGH, 2 MID and 1 LOW.



**LED Light**

For better vision while vacuuming.



**Easy and Quick Dust Disposal**

The dust case is designed for easy dust removal and eliminates the need for disposable bags.



**HIKOKI Cordless Cleaners**

Model		R 36DA	R 18DB	R 12DA	R 10DAL	R 18DSL
Suction Work Rate	High	155W	40W	30W	24W	
	Mid	65W	30W	18W	18W	18W
	Low	35W	16W	10W	10W	
Dust Case Capacity		560ml				670ml
Conitunous Operating Time per Charge <sup>*3</sup>	Battery	BSL 36A18	BSL 36A18 BSL 1850	BSL1240M	BCL1015	BSL1850
	High	15min	40min	25min	13min	
	Mid	30min	48min	43min	17min	48min
	Low	60min	66min	65min	25min	
Weight including Battery		1.6kg	1.7kg	1.2kg	1.0kg	1.5kg
Standard Accessories <sup>*5</sup>		Battery, Charger, Flooring Nozzle, Crevice Nozzle, Extension Pipe (with Nozzle Holder), Battery Cover				Brush Nozzle, Crevice Nozzle, Squeegee Nozzle

\*1. The noise level is shown for reference purposes and varies according to the measurement system used. \*2. Vs. HIKOKI R18DA cordless cleaner.

\*3. The stated continuous operation times are approximate, and the actual time varies depending on the battery state.

\*4. The filtration efficiency was tested with 20g talc powder. Using the filter does not guarantee complete removal of dust particles and viruses. \*5. Standard accessories vary by country or area.