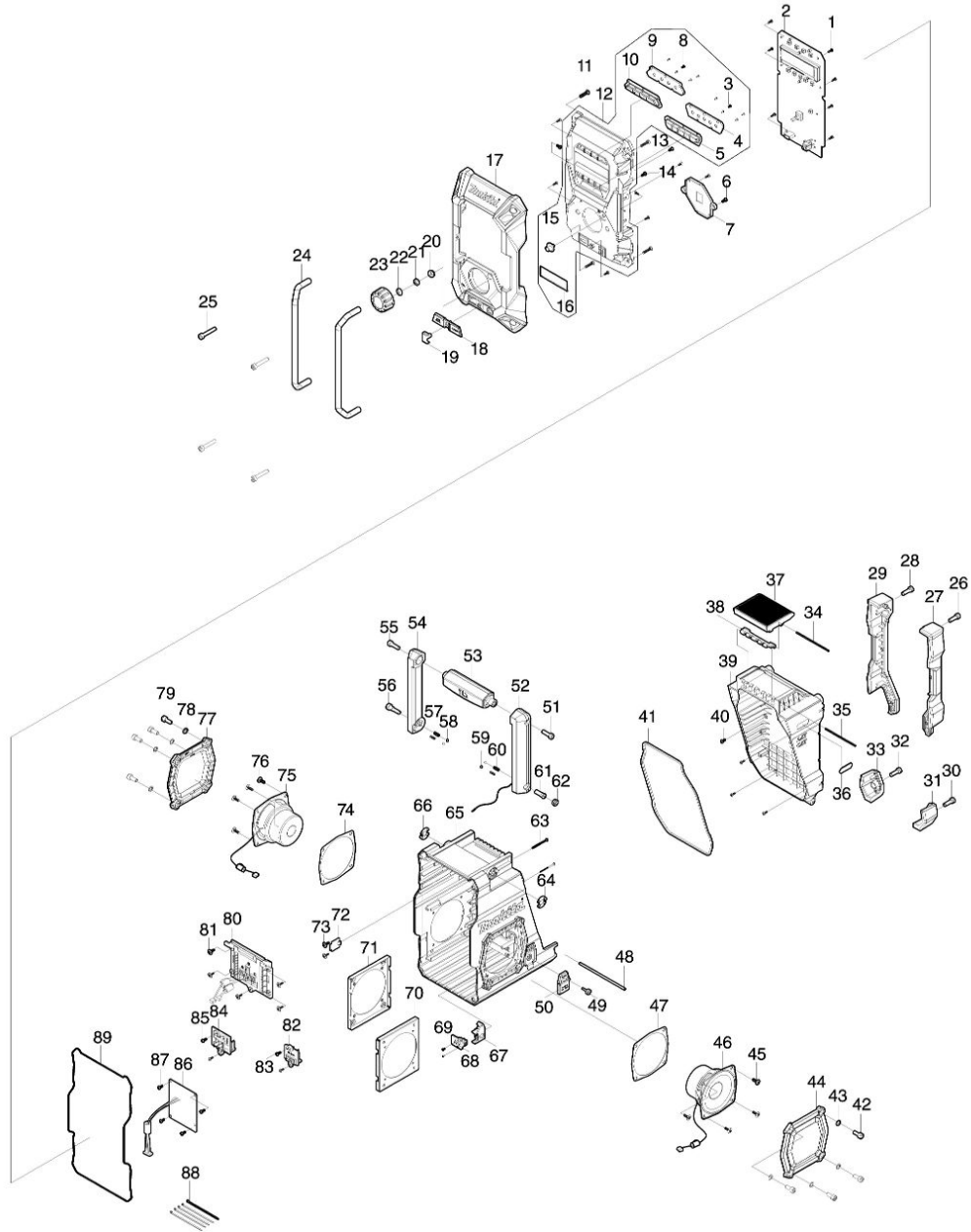


# Partdrawing for MR004GZ - Bouwradio



Model No.MR004G JOB SITE RADIO



Nr.	Part nr.	Name
001	SE00000521	Schroef M3X8 (Zk) Dmr200
002	SE00000950	Printplaat A MR004G
003	SE09090011	Tapschroef 1.7 Bmr100
004	SE00000909	Presetknophouder MR004G
005	SE00000910	Presetknop MR004G
006	SE00000521	Schroef M3X8 (Zk) Dmr200
007	SE00000911	Knophouder MR002G
008	SE09090011	Tapschroef 1.7 Bmr100
009	SE00000907	Schakelknophouder MR004G
010	SE00000951	A/U knop MR004G
011	SE09064161	Schroef M4X16 Bmr100
012	SE00000952	Voorhuis MR004G
013	SE00000854	Parker 3x6mm MR001G
014	SE00000521	Schroef M3X8 (Zk) Dmr200
015	SE00000855	Schakelknop MR003/4G
016	SE00000856	Pakking MR003/4G
017	SE00000953	Stootrand MR004G
018	SE00000916	Afdekkap rubb jack MR002
019	SE00000860	Afdekkap jack MR001
020	SE00000754	Borgring DMR115
021	SE00000755	Borgmoer DMR115
022	SE21B1110A	Volumeknopring Bmr100
023	SE00000861	Draaiknop MR001
024	SE00000862	Handgreep MR001
025	SE00000709	Schroef 6x33mm DMR115
026	SE09176166	Schroef M6X16 Bmr100
027	SE00000864	Stootrand R MR001
028	SE09176166	Schroef M6X16 Bmr100
029	SE00000863	Stootrand L MR001
030	SE09176166	Schroef M6X16 Bmr100
031	SE00000866	Stootrand R MR001
032	SE09176166	Schroef M6X16 Bmr100
033	SE00000865	Stootrand L MR001
034	SE00000868	Pin 2x84 MR003/4G
035	SE00000539	Pin 2X77Mm Dmr200
036	SE00000872	Label XGT MR003/4G
037	SE00000917	Afdekkap MR004G
038	SE00000536	Sluitplaat Dmr200
039	SE00000920	Batterijkapset MR002G
040	SE00000521	Schroef M3X8 (Zk) Dmr200
041	SE00000873	Pakking batt.kap MR001G
042	SE9076146A	Schroef M6X14 Bmr100
043	SE024J9070	Pakking Bmr100/102
044	SE00000874	Speakergaas MR001
045	SE09090023	Schroef M4X12 Bmr100
046	SE00000955	Speaker R MR004G
047	SE00000876	Speakerpakking MR001
048	SE00000877	Montagepin MR001
049	SE00000404	Schroef 3X14Mm

Nr.	Part nr.	Name
050	SE00000878	Afdekkap DC-jack MR001/2G
051	SE00000176	Tapschroef 6X20Mm Bmr102
052	SE00000939	Handgreep R ant MR003G
053	SE00000881	Handgreep MR001G
054	SE00000879	Handgreephendel L MR001G
055	SE00000176	Tapschroef 6X20Mm Bmr102
056	SE00000715	Schroef 6x17mm DMR115
057	SE00000184	Drukveer Bmr102
058	SE09994007	Kogel Bmr100
059	SE09994007	Kogel Bmr100
060	SE00000184	Drukveer Bmr102
061	SE00000716	Schroef 7x16mm DMR115
062	SE00000717	Schroef 10.8x4,5mm DMR115
063	SE00000445	Verzonken Schroef 3X45 Dmr106
064	SE00000888	Handgreepplt R MR001G
065	SE00000956	Achterhuis MR004G
066	SE00000889	Handgreepplt L MR001G
067	SE00000929	DC-jack houder MR002G
068	SE00000958	Printplaat F MR003G
069	SE09090011	Tapschroef 1.7 Bmr100
070	SE00000892	Speakerhouder MR001
071	SE00000892	Speakerhouder MR001
072	SE00000785	Circuit G DMR115
073	SE00000193	Tapschroef 3X10Mm Bmr102
074	SE00000876	Speakerpakking MR001
075	SE00000963	Speaker L MR004G
076	SE09090023	Schroef M4X12 Bmr100
077	SE00000874	Speakergaas MR001
078	SE024J9070	Pakking Bmr100/102
079	SE9076146A	Schroef M6X14 Bmr100
080	SE00000959	Aansluitunit XGT MR004G
081	SE00000193	Tapschroef 3X10Mm Bmr102
082	SE00000960	Aansluitunit CXT MR004G
083	SE00000521	Schroef M3X8 (Zk) Dmr200
084	SE00000961	Aansluitunit LXT MR004G
085	SE00000521	Schroef M3X8 (Zk) Dmr200
086	SE00000962	Printplaat D+M MR004G
087	SE00000521	Schroef M3X8 (Zk) Dmr200
088	SE00000195	W/Ties 100Mm Bmr102
089	SE00000899	Achterhuispak MR001G