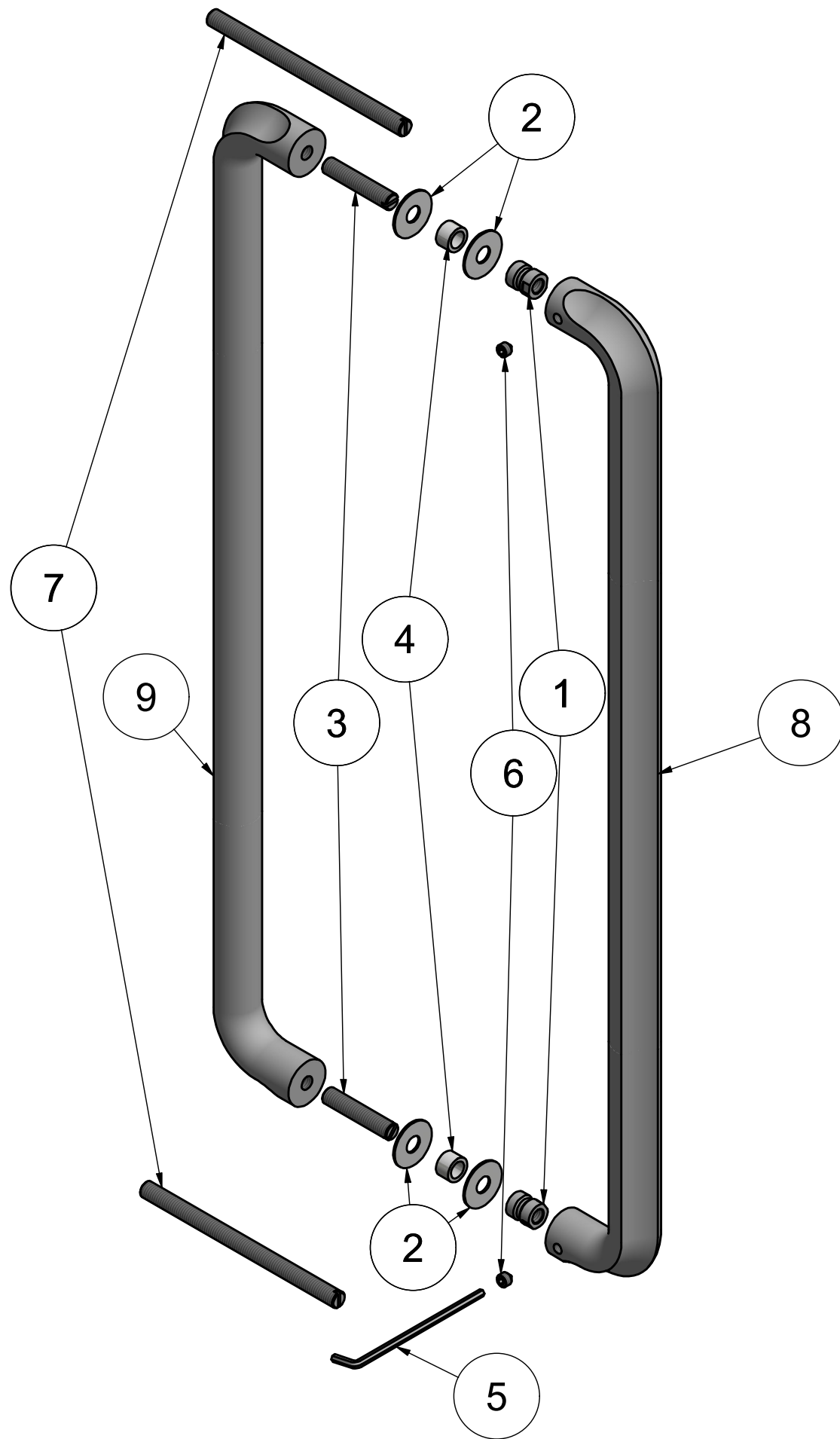


ECLIPSE DR500 PA

solid pull handle back to back
fixing
stainless steel



9	1	Eclipse_A_500_M8_V01	
8	1	Eclipse_A_500_D12_V03	
7	2	FST_P0002_M8x120	STUD (MS) M8 X 120.ipt
6	2	FGS_P0003_M6x6	Grub Screw M6x6
5	1	FAK_P0003_4mm_M6	ALLEN KEY 4 MM (M6)
4	2	FSL_P0002_D12x8.2xL7.5	SLEEVE OD12x8.2 L7.5
3	2	FST_P0001_M8x40	STUD (MS) M8 X 40.ipt
2	4	FWH_P0070_23x8,2x1	WASHER PL OD23xID8.2x1.0
1	2	FCL_P0001_D12M8	COUPLING AL D12xM8x14.5
Item	Qty	Part number	Description

<p>FORMANI[®]</p> <p>FORMANI HOLLAND B.V. EUROPALAAN 12 6199 AB MAASTRICHT-AIRPORT NL T +31 (0)43 308 90 00 INFO@FORMANI.COM WWW.FORMANI.COM</p>	<p>Type :</p> <p>ECLIPSE DR500 PA</p>	<p>Version:</p> <p>V01</p>	
	<p>Formani filename: 3901G001_DR500_PA_V01_DETAIL.dwg</p>	<p>Description:</p> <p>solid pull handle back to back fixing stainless steel</p>	<p>Format</p> <p>A3</p>
	<p>Drawn by: Semih Aslan</p>		
<p>Creation date: 18-11-2020</p>			