

**RAWLPLUG®**

**PACKAGING TYPES**

**TIMBER UNO CLIP**

Clip-strip packaging **made in as much as 70% of wood**. To clearly showcase our attention to the customer's convenience, **the screw diameters recommended for each plug diameter** are marked in a visible place on the packaging, along with **the diameter of the drill bit** to be used before the product can be installed. Besides the hanging option, the TIMBER UNO CLIP can also be presented in collective packaging, either on shelves or next to cash desks, which provides for the display itself.



PRODUCT CODE	Plug size [mm]	Quantity per CLIP	CLIP size [mm]	Quantity per item packaging	Quantity per collective packaging	Barcode
R-U1-YEL-96-C-TB	5 x 24	96	70 x 190 x 25	10	10	5906675466859
R-U1-RED-96-C-TB	6 x 28	96	75 x 200 x 30	10	10	5906675466842
R-U1-BRN-96-C-TB	7 x 30	96	80 x 220 x 30	10	10	5906675466835
R-U1-BLU-80-C-TB	8 x 32	80	85 x 205 x 35	10	10	5906675476339
R-U1-GRY-80-C-TB	10 x 36	80	95 x 240 x 45	10	10	5906675475110

**100% BIODEGRADABLE B-PACK**

- The BIO B-PACK bags represent a unique type of Rawlplug packaging:
- their **transparency** makes it possible to become perfectly familiar with the contents, while the design allows for both **hanging and standing display arrangement**;
  - the B-PACK bags can be disposed into a biodegradable waste bin or a compost bin;
  - the raw materials used in production of our **biodegradable containers** are corn, potatoes and wood;
  - our BIO packaging consists of paper, transparent cellulose foil, metallised foil, cellulose foil, and starch, depending on the structure.

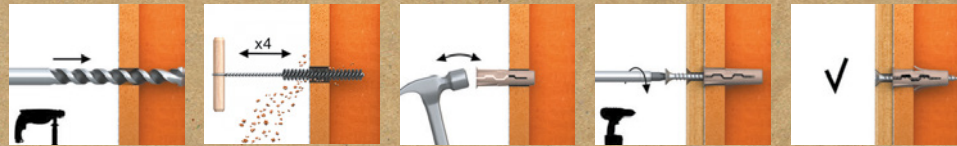


PRODUCT CODE	Plug size [mm]	Screw size [mm]	Quantity per unit packaging	Quantity per collective packaging
R-BIOS-UNOT-05/80	5 x 24	x	80	12
R-BIOS-UNOT-06/60	6 x 28	x	60	12
R-BIOS-UNOT-07/50	7 x 30	x	50	12
R-BIOS-UNOT-08/34	8 x 32	x	34	12
R-BIOS-UNOT-10/24	10 x 36	x	24	12
R-BIOS-UNOT-05+/40	5 x 24	3,5 x 30	40	12
R-BIOS-UNOT-06+/30	6 x 28	4,0 x 35	30	12
R-BIOS-UNOT-07+/26	7 x 30	4,0 x 40	26	12
R-BIOS-UNOT-08+/20	8 x 32	4,5 x 40	20	12
R-BIOS-UNOT-10+/14	10 x 36	5,0 x 45	14	12

Universal and eco-friendly plug  
**Timber UNO**

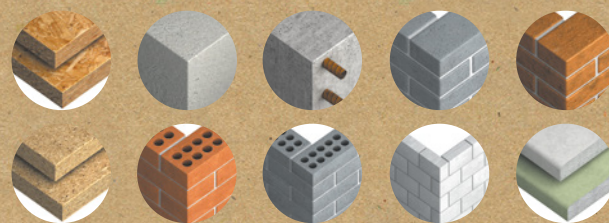
**RAWLPLUG®**

**INSTALLATION GUIDE**



**BASE MATERIAL**

- OSB
- Particleboard
- Reinforced concrete
- Non-reinforced concrete
- Solid brick
- Perforated brick
- Solid calcium silicate brick
- Hollow calcium silicate brick
- Aerated concrete
- Plasterboard



**Rawplug Ltd**  
Skibo Drive  
Thornliebank Industrial Estate  
Glasgow G46 8JR

Tel: +44 (0) 141 638 7961  
Fax: +44 (0) 141 638 7397

rawlinfo@rawlplug.co.uk  
www.rawlplug.co.uk



**RAWLPLUG®**



**timber UNO®**

**THE WORLD'S FIRST PLUG MADE OF 70% WOOD**

Increased strength and environmental safety

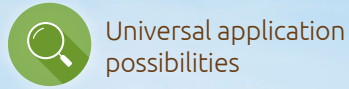


**Universal plug**

**100 years** 1919-2019 **RAWLPLUG®**

www.rawlplug.com

## ANCHORING MADE TRULY ECO-FRIENDLY!



Universal application possibilities



### Why have we created the Timber UNO fixing made of 70% wood?

- **Trust & Innovation.** Rawlplug is the **first manufacturer of fixing solutions** to offer the customers a universal application plug built entirely of eco-friendly materials. The history repeats itself. As more than 100 years ago, when John Rawlings invented and patented the world's first expansion plug, so now, we continue to think out-of-the-box and make use of unconventional production technologies. Innovative solutions are inherent elements of the Rawlplug brand's DNA!
- **Eco-friendliness is not just a slogan.** We actively seek new solutions with a positive environmental effect, and designing a plug **composed in 70% of wood** makes a notable contribution to reducing the extraction of petroleum-derived raw materials typically used to produce components for traditional PP or PA plugs. The Timber UNO is our expression of encouragement towards **eco-friendly construction**, for instance of wooden houses or passive buildings.
- **UNO – no. 1 not only in the UK!** The Rawlplug Group annually sells more than 200 million pieces of the traditional UNO. **If you have tested the UNO at home once, you'll keep using it again and again.**



### APPLICATIONS

- Wall-mounted shelves
- Cabinets
- Curtain rods
- Suspended ceilings
- Radiators
- Electrical systems
- Lighting
- Cable trays
- Bathroom fixtures and accessories

# Universal, reliable, eco-friendly



Unique plug design which **initiates the expansion at the hole inlet** in the substrate, instead of at the hole bottom



Flange **preventing the plug from slipping** inside the hole



Exceptional geometry ensuring maximised expansion and **substrate adhesion**, making the Timber UNO a safe solution for all substrates and all applications



**Anti-rotation fins** preventing the sleeve from turning inside the hole during installation, which makes the plug exceptionally efficient in irregular and unstable holes



**Increased load capacity** thanks to adding wood to the plug material



**Innovative mixture** the Timber UNO is second to none in terms of **environmental safety**. This quality makes it a perfect choice for **green construction projects**



Two **symmetrically split halves of the plug** combined with two-directional expansion-based operation make it possible to achieve **high expansion force**



## RELIABILITY

The unique design makes the plug expand in the substrate at the hole inlet, unlike in most regular fixing solutions which expand starting from the hole bottom. This allows you to use the plug even in worn holes of imperfect geometry.

## VERSATILITY

The plug's exceptional design makes it suitable for application in virtually any substrate and any kind of hole.

## STRENGTH

Its unique geometry guarantees maximised expansion and substrate adhesion, which enables the plug to attain relatively high pull-out strength in all substrates, including thin-walled panels.

## STABILITY

Two symmetrically split halves of the plug combined with two-directional expansion-based operation enable you to achieve high expansion force even over a short section, while the plug's flange prevents it from slipping in the hole.

## SPECIALISATION

The plug's unique design has made it possible to significantly reduce its length and so create an optimal solution for anchoring in thin-walled concrete slabs where peak load capacities must be attained even on shallow anchorage.



TIMBER UNO



TIMBER UNO with screw

